



WASHINGTON STATE UNIVERSITY  
WALLA WALLA COUNTY EXTENSION

# 4-H NEWS

April 2009

328 W. Poplar Walla Walla, WA 99362  
E-Mail Jeanie at fultonj@wsu.edu

Phone: 509-524-2685 Fax: 509-524-2695  
Website: <http://wallawalla.wsu.edu/4h>

## Demonstration Contest April 20-23, 2009



The preliminary demonstration contest will be held April 20, 21, 22, and 23. Entry forms were mailed out in last month's newsletter and need to be submitted by April 7th. Extra entry forms are available at the Extension office or online at <http://wallawalla.wsu.edu/4h/formsapplications.htm>. Videos, publications, and notebooks to help you with your presentation are available for check out from the Extension office. *How to Do a 4-H Public Presentation* (EM4787) and leader guide, *Public Presentations, Demonstrations, and Illustrated Talks* (EM4788) may be downloaded free at <http://pubs.wsu.edu> and copies are also available at the Extension office. Youth must give a presentation at the April contest to be eligible to participate in the May contest.

## Horse Demonstrations

Earn a chance to go to the national competition in Louisville, Kentucky! 4-H members in grades 9-12 who give a demonstration, team demonstration, or public speech on their horse project during the county contest may be selected to compete in the State Equine Presentation Contest. The winners of the State Contest have the opportunity to go to Louisville for the national competition. Now is the time to plan your equine presentation for the Walla Walla County contest in April.

## A Rewarding Experience

*I'm uncomfortable speaking in public. I'm too busy.* Are these excuses you make to avoid giving a demonstration? Why should you give a demonstration? The fact is that the more you speak in public the easier it becomes. Each year your presentation skills increase and your self-confidence to speak in public becomes stronger. By starting out giving presentations when you are young, you will find that high school and college communication classes will become easier, job interviews will be less stressful, and you will feel comfortable speaking your opinion at club meetings and other gatherings.

### Things to Remember While Giving a Demonstration

- √ **Introduce yourself and your club.**
- √ **Remember to smile and have good eye contact.**
- √ **Can people see and hear you from the back of the room?**
- √ **Summarize what you've said.**
- √ **Ask if there are any questions, and repeat the question for all to hear.**
- √ **Thank your audience for listening.**

The question has been asked.....

Thank you for listening.

# 4-H Calendar

April	Event	Place	Time
3 & 4	Waitsburg Jr. Show	Waitsburg	
4	Goat & Sheep weigh-in for MF Jr. Show	MF Show Grounds	8 AM
7	Demonstration Contest Entry Forms Due	Extension Office	5 PM
9	Leaders' Meeting	Extension Office	7 PM
11	WSU Pig Sale	Moses Lake, WA	11 AM
<b>20-23</b>	<b>April Demonstration Contest</b>	Extension Office	5-8 PM

May	Event	Place	Time
5-10	Milton Freewater Jr. Show	MF Show Grounds	
9	WSU Pig Sale	Pullman, WA	10 AM
14	Leaders' Meeting	Extension Office	7 PM
18-21	<b>May Demonstration Contest</b>	Extension Office	5 PM
30	Swine Weigh-In for Walla Walla Fair	WW Fairgrounds	8 AM– Noon
30	Dog Obedience Classes (May 30; June 6, 13, 20, 27)		

## Annual Horse Certificates Due June 1, 2009

All 4-H horse members must have an annually updated horse certificate on file for the horses they plan to use for fair contests. To renew forms and update information from last year, you may stop by the Extension office, phone 525-2685, or email [bbryce@wsu.edu](mailto:bbryce@wsu.edu). Be sure to include all information that is necessary when phoning or emailing. New certificates may be obtained from the Extension office or downloaded from <http://wallawalla.wsu.edu/4h/formsapplications.htm>.

Feed lease agreements must also be updated and on file by June 1. Feed lease agreements are required when a 4-H member does not own their project animal. Examples of feed lease agreements are available at the Extension office.

## Sheep Shearing Event

The Mill Creek Wranglers sheep group will be hosting a sheep shearing event on April 25. To have your sheep sheared, you must schedule a shearing time with Susan Fazzari. Contact Susan at 509-386-8637 or email [susanlmf@yahoo.com](mailto:susanlmf@yahoo.com).



## Milton Freewater Jr. Show Books Available

Milton-Freewater Junior Show exhibitor books are now available at the Extension office. This year entry forms are only available online at [www.mfjshow.com](http://www.mfjshow.com). The entry deadline is April 8, 2009. Updated record books are required with entry forms. Entry forms with record books may be dropped off at the Extension office by 5 PM, April 8.



# 4-H Club Reports

## Sew Krafty Kids Donate Baby Blankets

On Monday, February 16<sup>th</sup>, members of the Sew Krafty Kids 4-H Group donated baby blankets to St. Mary's Medical Center. The baby blankets were made by the members of the 4-H group as a community service project. Members presented their blankets to mothers of newborns, or mothers in labor. Nurse Anna greeted the group at the maternity ward and helped coordinate the presentation. The Sew Krafty Kids are taught to sew by club leaders Shirl Phillips and Debi Evans.

## Make It With Wool Contest



Sew, knit, crochet, or felt a wool garment and you might win Pendleton wool fabric, a serger, or a trip. Construct a garment from fabric/yarn containing a minimum of 60% wool

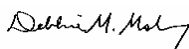
fibers and enter the *Make It with Wool* contest. Contestants will model their garments and will be judged, 60% on appearance and fit and 40% on construction.

Last year, Walla Walla 4-H member Michael Nordheim placed first in her age group in the Washington State contest and placed fourth in the Junior age group at the National contest. She was also featured in the fashion show at the annual Sewing and Stitchery Expo in Puyallup.

For complete contest details and information, stop by the Extension office for a brochure or go to the website <http://home.earthlink.net/~washingtonwoolcontest/> or email questions to [smparr4h@earthlink.net](mailto:smparr4h@earthlink.net).



Washington State University Extension helps people develop leadership skills and use research-based knowledge to improve their economic status and quality of life.

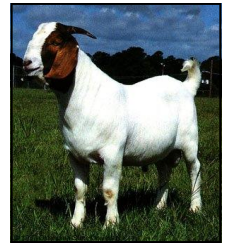


Debbie M. Moberg  
County Extension Director

*Helping You Put Knowledge To Work*

## Goat Fitting & Showing Clinic

The Ranch and Home 4-H Club is hosting a goat fitting and showing clinic on April 26, 2009 starting at 1:30 p.m. The clinic will be held at 6522 HWY 12, behind Frenchtown Connection and in front of the red barns. The clinic will cover topics on showmanship, fitting techniques for market and breeding goats, and nutrition & management plans for market goats.



A donation to the Christian Aid Center is the price of admission. Please bring items from the Christian Aid Center's wish list: Kleenex, dish soap, laundry soap, bleach, Pinesol, toilet paper, paper towels, fabric softener, or deodorant (men's and women's).

## Market Animal Health Records Revised Forms for 2009

Market animal health records must be kept for 4-H sale animals. 4-H exhibitors must have the animal's health form in their hand and ready to turn in before the market animal will be weighed at Fair.

New revised forms for 2009 Fair are available at the Extension office or online at <http://wallawalla.wsu.edu/4h/formsapplications.htm> or <http://4h.wsu.edu/projects/index.htm> (click on species). They will also be available on animal weigh-in day. Old forms will no longer be accepted.

## Shooting Sports Training



A 4-H Shooting Sport leader training will be in Republic, WA on April 17-19, 2009. This training will feature archery, pistol, rifle, shotgun and hunting. The fee for the training is \$50 per person due by **April 10**. Archery with NAA Level 1 certification is an additional \$20. This is the last shooting sports training scheduled for the year. Don't miss out on this training opportunity!

Attendees from Walla Walla County must be preapproved 4-H leaders. Contact the Extension office for 4-H leader requirements. For training registration form and more information, visit the state 4-H Shooting Sports website: <http://4h.wsu.edu/projects/shooting.htm>. For additional information, contact **Emily Burt** at [emburt@wsu.edu](mailto:emburt@wsu.edu) or **Janet Schmidt** at [schmidtj@wsu.edu](mailto:schmidtj@wsu.edu).

